



# eagle online

download and manage data over the internet

---

---

## overview

Download and manage your data over the internet with the Eagle Data Management Software platform.

Manage your data on an iPhone, iPad or desktop computer anywhere in the world with an internet connection.

### **low maintenance, low hassle**

The Eagle platform operates through a web browser over the cloud. There is no software to install or licences to manage.

The Eagle platform is pre-configured with the range of data loggers supported by Edaphic Scientific. The Halytech range of loggers have a built-in modem and connect directly to the Eagle platform. The Campbell Scientific range of loggers require an add-on modem. Edaphic Scientific provides a specially designed modem that simply clips onto a Campbell Scientific data logger and is then ready to go.



## Advanced features for Campbell

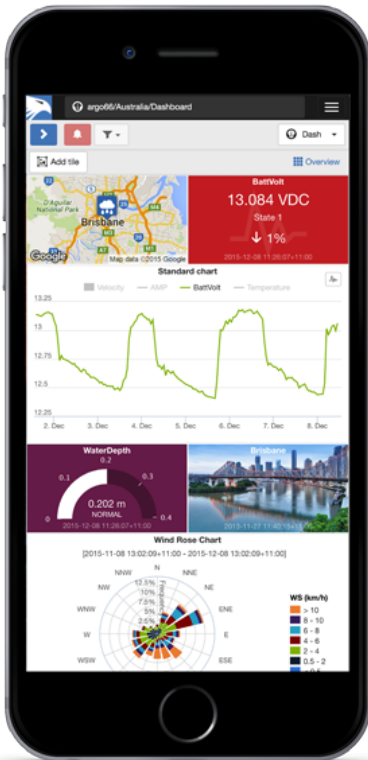
Scientific loggers include automatic parameter creation/synchronization based on logger tables, clock-synchronisation to any timezone, program and firmware updates to one or more loggers with a single click.

Use Control parameters to instantly update public variables from the user interface. Enable Remote Access to use LoggerNet or other 3rd party applications for low level operations.

Connect your logger to eagle.io using Static IP, TCP Callback or the Scout for hassle free 2 way connectivity.

Acquire data on schedule, event-based or on-demand.

**secure, reliable**



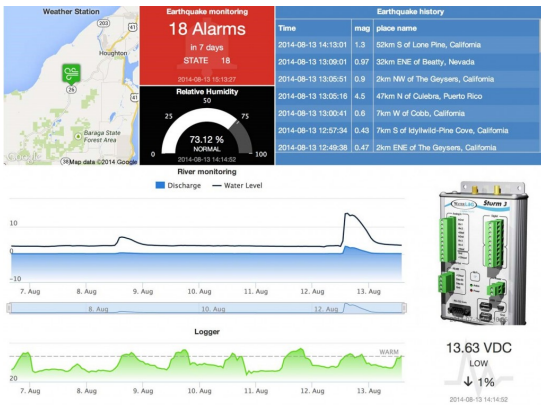
The Eagle platform is used by some of the world's leading companies including Xylem and Pentair. These large companies trust Eagle as it is highly secure.

The Eagle platform offers a 99.9% up-time guarantee and commercial grade service level agreement. We also offer extensive email, forum and phone support.

**flexible, customizable**

Take control of who can access, configure and administer your network or subscribe to notifications when things change. Empower field teams with instant answers and supercharge the way you secure and share your data with others.

**dashboards**

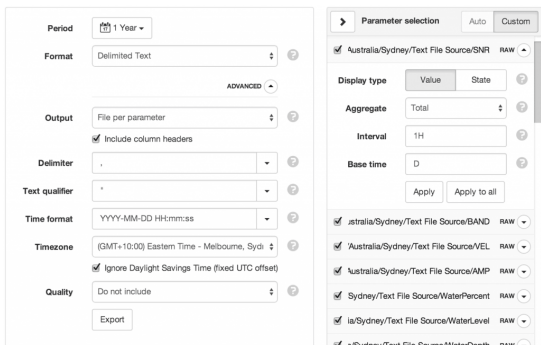


Create unlimited custom views of your data in visually appealing layouts using animated gauges, charts, lists, maps and images. In one screen you can view multiple environmental parameters at a single site.

Resize individual tiles or drag and drop to reposition. Customize individual tiles including setting background color, text labels, alarm functionality and specific properties such as chart duration, map style and zoom, etc.

The dashboard layout is automatically adjusted to best suit your display device so it remains highly useable on smaller devices such as phones and tablets.

## data export



The data export configuration interface includes the following settings:

- Period:** 1 Year
- Format:** Delimited Text
- Output:** File per parameter
- Include column headers:**
- Delimiter:** .
- Text qualifier:** ' ' (single quote)
- Time format:** YYYY-MM-DD HH:mm:ss
- Timezone:** (GMT+10:00) Eastern Time - Melbourne, Sydn
- Ignore Daylight Savings Time (fixed UTC offset):**
- Quality:** Do not include
- Export:**

**Parameter selection:** Auto Custom

- Australia/Sydney/Text File Source/SNR RAW
- Display type: Value State
- Aggregate: Total
- Interval: 1H
- Base time: D
- 
- Australia/Sydney/Text File Source/BAND RAW
- Australia/Sydney/Text File Source/VEL RAW
- Australia/Sydney/Text File Source/AMP RAW
- Sydney/Text File Source/WaterPercent RAW
- la/Sydney/Text File Source/WaterLevel RAW
- s/Sydney/Text File Source/WaterDepth RAW

Quickly export historic data for a single parameter, a selection of parameters or all parameters in your network. Output your data in a fully customizable delimited text format.

Choose to export the raw data or use the built-in historic aggregates to process the data and generate advanced statistical reports. eg. Rainfall monthly totals and maximum flow rates, etc.

Exporting occurs in the background so you can continue to use the system as normal or export additional data as required. When the exported data is ready, an export message is displayed to the user containing a secure link to the download.

You can also take advantage of the HTTP API for automated data exports.













### document storage

Securely store related documents in the cloud. Documents can be files of any type – including spreadsheets, reports, programs, images, etc.

Use the Workspaces Menu to organise your documents and manage user access. The built-in media gallery can be used to quickly preview images or supported video clips.

Documents can be uploaded manually from the user interface via drag-drop or the upload can be automated via Email and FTP.

### alarms and notifications

| Parameter  | Value                  | State    |   |   |
|--|------------------------|----------|---|---|
|  Battery       | 12.8 VDC               | LOW BATT |  |  |
|  River Flow    | 5.41 m <sup>3</sup> /s | OVERFLOW |  |  |
|  Soil Moisture | 85.1 %                 | NORMAL   |   |  |
|  Temperature   | 26.2 °C                | NORMAL   |   |  |

Configure alarms on Locations, Sources and Parameters. Assign notification categories and trigger criteria.

Users with appropriate security permissions can personally subscribe to receive notifications for any asset in the system and choose to receive emails and SMS on a per category basis.

For example managers may only want to receive an SMS for critical events while field staff may require notifications for all events such as low battery alarms.

The user interface provides visual feedback of current and historical alarms, and supports alarm acknowledgement operations which make it easy for teams to manage entire networks concurrently.

## Types of alarms

**Communication alarms** are triggered when communication to a data logger or server has failed.

**Configuration alarms** are triggered if an error is encountered while sending programs and configuration to supported data loggers.

**Control alarms** are triggered after a failed Control operation.

**Parameter state alarms** occur when data is received that is above, below or on a user defined threshold. Unlimited numbers of thresholds can be configured and each can be assigned its own notification category.

**Outdated alarms** indicate no new data has been received from a Data source within a user defined period.

## try the software now

### the grape monitor

The Grape Monitor is a monitoring system that is freely accessible to any member of the public. The Grape Monitor utilises the Eagle.IO platform to download and display data. The monitoring systems are located in western New South Wales, Australia, but can be viewed anywhere in the world with an internet connection.

[Visit The Grape Monitor.](#)

## related products

- [Data loggers](#)
- [Download data over the internet](#)
- LoRaWAN
- [Environmental monitoring systems](#)
- [Sap flow sensors](#)



**edaphic scientific**

environmental research & monitoring equipment