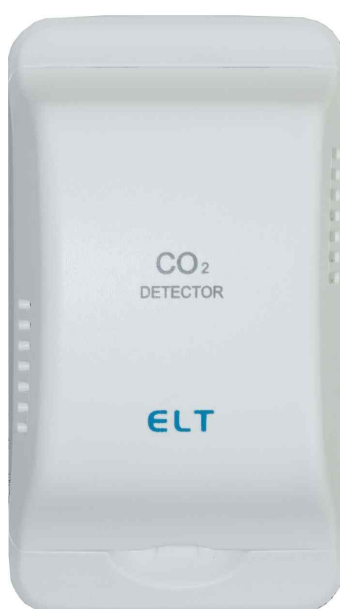


Carbon Dioxide (CO₂) Transmitter And Controller Operation Manual

Data sheet for CD-100



**CD-100
(without LCD Display)**

General

CD-100 is Transmitter type models of CO₂ Sensor, which is wired with 2 power lines, 2 signal lines, gives 0/4-20mA Current input module or 0/2-10V Voltage input module.

Features

- Output mode : Voltage /Current output
- LCD Display model is available (CD-100L).
- Non-Dispersive Infrared (NDIR) technology used to measure CO₂ levels.
- Re-calibration function
: One month period / 10min period
- Size : 123mmx69mmx40mm

CD-100 Specification

General Performance

Operating Temperature range

0 ~ 50°C

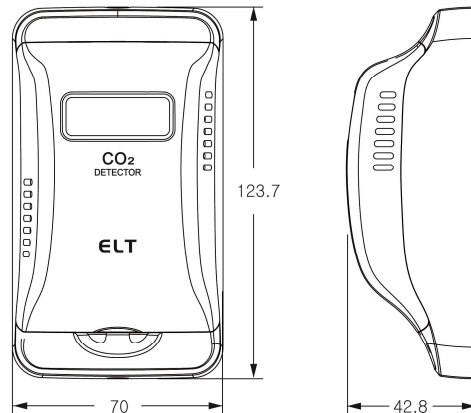
Operating Humidity range

0 ~ 95% RH (Non-condensing)

Storage Temperature

-20°C ~60°C

Dimensions (unit : mm)



CO₂ Measurement

Sensing Method

NDIR (Non-dispersive Infrared)

Measurement Range

0 to 2,000 / 5,000 / 10,000ppm
(Optional)

Accuracy

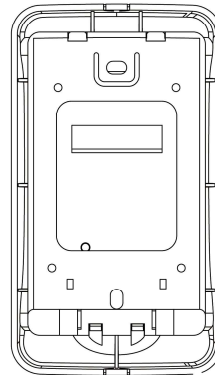
±30ppm ±5%

Response Time(90%)

150 seconds

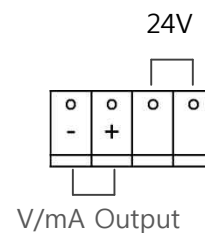
Sampling Interval

3 sec.



Wiring Method

CD-100



Electrical Data

Input Power

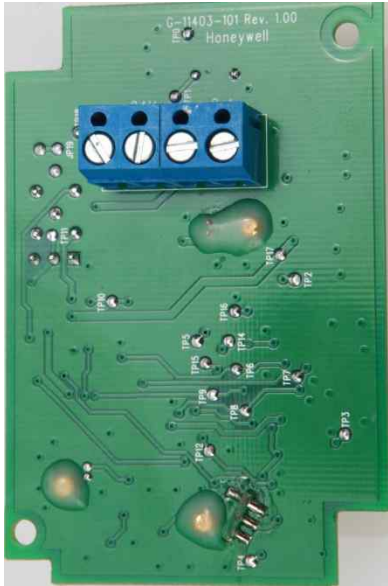
24VAC, 24VDC ± 20%, 50/60Hz
(2 power, 2 signal line wired)

Output Seletion

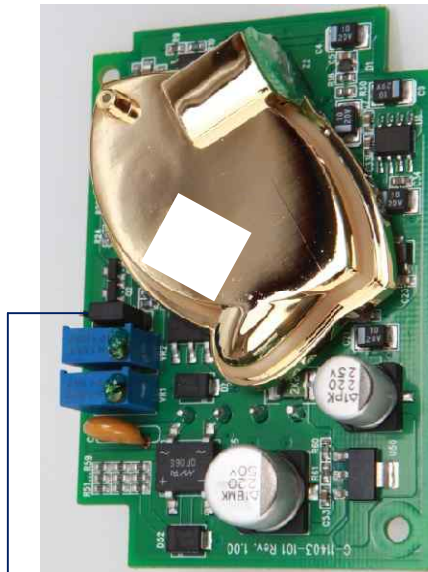
4 ~ 20mA & 2 ~ 10VDC OR

0 ~ 10VDC and 0 ~ 20mA

Either of above should be selected by customer on sale and Voltage output or current output could be set by moving Jumper cap.



JP1 Output Selection



JP1



Current output