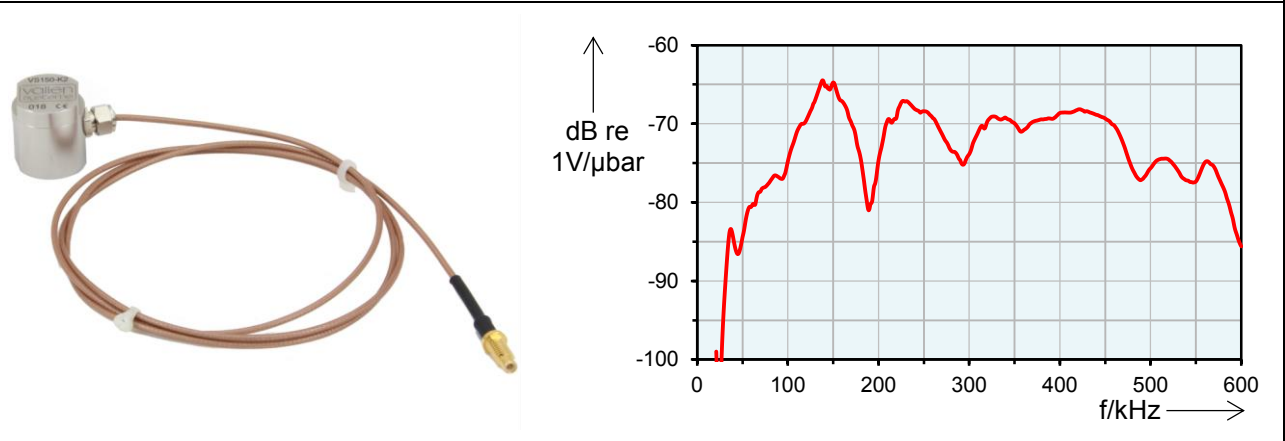


AE-Sensor Data Sheet

VS150-K2

The VS150-K2 is a passive piezoelectric AE-sensor with integral cable. Its frequency response is characterized by a peak at 150 kHz where it exhibits a resonance. It is suitable for almost all AE application. The VS150-K2 has a full metal housing and a watertight cap. It is rated IP68 and watertight up to 10 bar (maximum water depth of 100 m). The mechanical design makes it especially suited for adhesively mounting it to a test object.



Technical Specification			
Frequency Range (f_{peak}) [kHz]	100 to 450 (150)	Size (D x H) [mm]	20.3 x 22
Capacity [pF]	350	Weight [g]	56
Integrated Pre-amplifier	No	Case Material	Stainless Steel (1.4571/ 1.4404)
Operating Temperature [°C]	-40 to +100	Wear Plate	Stainless Steel (1.4571/ 1.4404)
Vibration – Sinus sweep	2 Oct/Min, 5 to 180 Hz, 40 g	Connector	SMC @ 1 m RG178 Cable
Ingress Protection Rating	IP68, max. 10 bar	Shield Cross-Talk [dB]	< -80

Standards and Directives	
EMC Directive	2014/30/EU
EMC Standards	EN61326-1:2013, EN61326-2-3:2013, EN61000-6-2:2006, EN61000-6-4:2011
Shock and Vibration Stand.	EN60068-2-6:2008
AE Standard	EN13477-1:2013, EN13477-2:2013

Accessories			
Pre-amplifier	AEP5, AEP3N	Sensor Cable	CBL-1-1M2-V15
Mounting Holder	MAG4H		

Important instructions for your safety

The sensor was produced according to the state of technology and tested against highest quality standards and technical safety requirements. A risk of malfunction remains which can lead to

danger to life of operator, uninvolved third parties as well as damage of object under test or objects in its vicinity. Read the safety instructions carefully before using the AE-sensor.

Supplemental safety directives

1. Read the Acoustic Emission Sensors document (<http://www.vallen.de/quote-ref>)
2. Make sure that you comply to regulations at the AE-sensor installation site
3. Store these instructions

⚠ CAUTION	<i>CAUTION indicates a hazardous situation which, if not avoided, may result in minor or moderate injury.</i>
<h3>Damaging of AE-sensor</h3> <p>An AE-sensor can get damaged when it is not operated within specified limits or handled carelessly. The function of the AE-sensor may be compromised or it may even be inoperable although its appearance e.g. housing, connector or wear plate do not indicate any damage.</p> <p>Risk:</p> <p>A damaged- or defective AE-sensor may not be able to detect potentially dangerous situations if it is used in a safety relevant inspection of e.g. pressure vessels or engineering structures such as bridges or dams. Failing of an object under inspection (e.g. bursting of a pressure vessel, collapsing of a bridge, etc.) may lead to fatal casualties.</p> <p>How to avoid the risk of damaging an AE-sensor:</p> <ul style="list-style-type: none"> • Do not store, transport or operate the sensor outside its specified environmental conditions • Do not drop the AE-sensor and handle it with care • Transport AE-sensors only in the boxes provided by Vallen Systeme <p>How to avoid using a non-functional AE-sensor:</p> <ul style="list-style-type: none"> • Do not use an AE-sensor that is visibly damaged. • Check the function and response of an AE-sensor prior to an inspection or AE-test by the use of controlled artificial sources • Check the function and response of an AE-sensor in regular intervals or when suspected to be damaged or to have undergone severe environmental conditions 	

Disclaimer

The material contained in this document is provided "as is" and is subject to being changed, without notice, in future editions. Further, to the maximum extent permitted by applicable law, we, Vallen Systeme GmbH, disclaim all warranties, either expressed or implied with regard to this specification and any information contained herein, including but not limited to the implied warranties of merchantability and fitness for a particular purpose. We, Vallen Systeme GmbH, shall not be liable for errors or for

incidental or consequential damages in connection with the furnishing, use, or performance of this document or any information contained herein.

We shall not be liable for any direct, indirect, consequential or incidental damage arising out of the use or inability to use of the equipment delivered. We reserve the right to charge for any efforts taken to remedy any problems for which we are not responsible.